



Government of India
Ministry of Earth Sciences



India Meteorological Department

PRESS RELEASE-4

Time of issue: 1330 hours IST

Dated: 15-05-2021

Sub: Cyclonic Storm “Tauktae” (pronounced as Tau’Te) over eastcentral and adjoining southeast Arabian Sea: Cyclone Alert for Gujarat & Diu coasts (Yellow message)

Yesterday’s depression over Lakshadweep area moved north-northeastwards and intensified into deep depression in the same afternoon (1430 hrs IST) and into a **Cyclonic Storm “Tauktae” (pronounced as Tau’Te)** in the same midnight (2330 hrs IST) of 14th May over Lakshadweep area and adjoining southeast & eastcentral Arabian Sea.

It then moved nearly northwards and lay centred at 0830 hours IST of today, the 15th May, 2021 over eastcentral and adjoining southeast Arabian Sea near latitude 12.8°N and longitude 72.5°E, about 190 km north-northwest of Amini Divi, 330 km south-southwest of Panjim-Goa, 930 km south-southeast of Veraval (Gujarat) and 1020 km south-southeast of Karachi (Pakistan).

It is very likely to intensify further into a Severe Cyclonic Storm during next 6 hours and into a Very Severe Cyclonic Storm during the subsequent 12 hours. It is very likely to move north-northwestwards and cross Gujarat coast between Porbandar & Naliya around 18th May Afternoon / evening.

Forecast track and intensity are given in the following table:

Date/Time(IST)	Position (Lat. °N/ long. °E)	Maximum sustained surface wind speed (Kmph)	Category of cyclonic disturbance
15.05.21/0830	12.8/72.5	75-85 gusting to 95	Cyclonic Storm
15.05.21/1130	13.2/72.5	85-95 gusting to 105	Severe Cyclonic Storm
15.05.21/1730	13.8/72.4	95-105 gusting to 115	Severe Cyclonic Storm
15.05.21/2330	14.5/72.3	110-120 gusting to 135	Severe Cyclonic Storm
16.05.21/0530	15.3/72.0	120-130 gusting to 145	Very Severe Cyclonic Storm
16.05.21/1730	16.5/71.5	130-140 gusting to 155	Very Severe Cyclonic Storm
17.05.21/0530	18.0/70.7	145-155 gusting to 165	Very Severe Cyclonic Storm
17.05.21/1730	19.5/70.0	150-160 gusting to 175	Very Severe Cyclonic Storm
18.05.21/0530	20.7/69.4	150-160 gusting to 175	Very Severe Cyclonic Storm
18.05.21/1730	22.0/69.1	145-155 gusting to 165	Very Severe Cyclonic Storm
19.05.21/0530	24.5/70.0	70-80 gusting to 90	Cyclonic Storm

Warnings:

(i) Rainfall:

- **Lakshadweep Islands:** Light to moderate rainfall at most places with heavy to very heavy falls at isolated places over northern Islands on 15th May and heavy falls at isolated places on 16th May.
- **Kerala:** Light to moderate rainfall at most places with heavy to very heavy falls at a few places and extremely heavy falls at isolated places on 15th, heavy to very heavy falls at isolated places on 16th and heavy falls at isolated places on 17th May.
- **Tamil Nadu (Ghat districts):** Light to moderate rainfall at many places with heavy to very heavy falls at isolated places on 15th May.

Contact: Cyclone Warning Division, Office of the Director General of Meteorology,
India Meteorological Department, Ministry of Earth Sciences.

Phone: (91) 11-24652484, FAX: (91) 11-24643128, 24623220, E-mail: cwdhq2008@gmail.com, Website: rsmcnewdelhi.imd.gov.in

Spatial rainfall distribution: Isolated: <25%, A few: 26-50%, Many: 51-75%, Most: 76-100%

Rainfall amount (mm): Heavy rain: 64.5 – 115.5, Very heavy rain: 115.6 – 204.4, Extremely heavy rain: 204.5 or more.

- **Karnataka (coastal & adjoining Ghat districts):** Light to moderate rainfall at most places with heavy to very heavy falls at a few places and extremely heavy falls at isolated places on 15th and heavy to very heavy falls at isolated places on 16th.
- **Konkan & Goa:** Light to moderate rainfall at most places with heavy to very heavy falls at a few places over south Konkan & Goa and heavy to very heavy falls at isolated places over north Konkan on 15th and heavy to very heavy falls at a few places over Konkan & Goa & adjoining Ghat areas on 16th and heavy falls at isolated places on 17th May over north Konkan.
- **Gujarat:** Light to moderate rainfall at many places very likely to commence over coastal districts of Saurashtra from 16th May afternoon, at many places with heavy to very heavy falls at isolated places over Saurashtra & Kutch and Diu and extremely heavy falls at isolated places in Junagarh & Gir Somnath Districts on 17th and with heavy to very heavy falls at a few places over Saurashtra & Kutch and Diu with extremely heavy falls (≥ 20 cm) at isolated places of Porbandar, Devbhoomi Dwarka, Jamnagar & Kutch districts on 18th.
- **West Rajasthan:** Light to moderate rainfall at many places with heavy to very heavy falls at isolated places very likely on 18th & 19th May.

(ii) Wind warning

- Squally weather with wind speed reaching 45-55 kmph gusting to 65 kmph is very likely over Maldives area and equatorial Indian Ocean during next 06 hours.
- Gale wind speed reaching 75 – 85 kmph gusting to 95 kmph is prevailing over east-central Arabian Sea and adjoining southeast Arabian Sea and Lakshadweep area. It is likely to increase over eastcentral Arabian Sea becoming 120-130 kmph gusting to 145 kmph from 16th May morning.
- Squally wind speed reaching 50-60 kmph gusting to 70 kmph along & off Kerala coast on 15th May.
- Squally wind speed reaching 50-60 kmph gusting to 70 kmph likely along & off Karnataka south Maharashtra & Goa coasts on 15th and Gale winds speed reaching 60-70 kmph gusting to 80 kmph along & off Maharashtra –Goa coasts on 16th May.
- Squally wind speed reaching 40-50 kmph gusting to 60 kmph likely over northeast Arabian Sea and along & off south Gujarat & Daman and Diu coasts on 17th morning and gradually increase becoming Gale winds speed reaching 150-160 kmph gusting to 175 kmph over northeast Arabian Sea from 18th morning and along & off Saurashtra & Kutch coasts (Devbhoomi Dwarka & Porbandar) and 120 -150 kmph gusting to 165 kmph over Kutch, Porbandar, Junagarh, Jamnagar districts of Gujarat from 18th May afternoon / evening for subsequent 06 hours.

(iii) Sea condition

- Sea conditions will be very rough over southeast Arabian Sea and adjoining Lakshadweep - Maldives area & equatorial Indian Ocean during next 06 hours.
- Sea condition over eastcentral Arabian Sea will be high to very high on 15th & very high to Phenomenal on 16th May and over northeast Arabian Sea on 17th & 18th May.
- Sea conditions will be rough to very rough over Comorin area and along & off Kerala coast on 15th, very rough to High over east central Arabian Sea along & off Karnataka coast on 15th May and Maharashtra – Goa coasts on 15th & 16th May. It is very likely to be very rough to

Contact: Cyclone Warning Division, Office of the Director General of Meteorology,
India Meteorological Department, Ministry of Earth Sciences.

Phone: (91) 11-24652484, FAX: (91) 11-24643128, 24623220, E-mail: cwdhq2008@gmail.com, Website: rsmcnewdelhi.imd.gov.in

Spatial rainfall distribution: Isolated: <25%, A few: 26-50%, Many: 51-75%, Most: 76-100%

Rainfall amount (mm): Heavy rain: 64.5 – 115.5, Very heavy rain: 115.6 – 204.4, Extremely heavy rain: 204.5 or more.

High over northeast Arabian Sea along & off south Gujarat coast from 17th May morning and very high to Phenomenal from 18th morning.

(iv) Storm surge warning

- Tidal wave of about 2- 3 m above astronomical tide is likely to inundate coastal areas of Morbi Kutch, Devbhoomi Dwarka, Jamnagar, districts and 1-2 meters along Porbandar, Junagarh, Gir Somnath, Amreli, Bhavnagar & Diu and 0.5 to 1m over the remaining coastal districts of Gujarat during the time of landfall.

(iv) Fishermen Warning

- Total suspension of fishing operations over eastcentral and adjoining southeast Arabian Sea and along & off Kerala – Karnataka – Goa – Maharashtra coasts.
- Total suspension of fishing operations over northeast Arabian Sea and along & off Gujarat coast from 17th May.
- The fishermen are advised not to venture into southeast Arabian Sea, Lakshadweep – Maldives areas, east central Arabian Sea along & off Karnataka coast, eastcentral Arabian Sea and along & off Maharashtra – Goa coasts and into eastcentral& adjoining northeast Arabian Sea along & off Gujarat coast till 18th May.
- Those who are out at Sea over north Arabian Sea are advised to return to the coast.

(vi) (A) Damage Expected over Devbhoomi Dwarka, Kutch, Porbandar, Junagarh, Gir Somnath & Jamnagar districts of Gujarat:

- Total destruction of thatched houses/ extensive damage to kutcha houses. Some damage to pucca houses. Potential threat from flying objects.
- Bending/ uprooting of power and communication poles.
- Major damage to Kutcha and Pucca roads. Flooding of escape routes. Minor disruption of railways, overhead power lines and signaling systems.
- Widespread damage to salt pans & standing crops,. Blowing down of bushy trees.
- Small boats, country crafts may get detached from moorings.
- Visibility severely affected.

(vi) (B) Damage Expected over Amreli, Rajkot & Morbi districts of Gujarat:

- Major damage to thatched houses/ huts. Roof tops may blow off. Unattached metal sheets may fly.
- Minor damage to power and communication lines.
- Major damage to Kutcha and some damage to Pucca roads. Flooding of escape routes.
- Breaking of tree branches, uprooting of large avenue trees. Moderate damage to banana and papaya trees. Large dead limbs blown from trees.
- Major damage to coastal crops.
- Damage to embankments/ salt pans.

(vii) Action Suggested:

- Total suspension of fishing operations.
- Judicious regulation of rail and road traffic.
- People in affected areas to remain indoors.
- Movement in motor boats and small ships unsafe.

The system is under continuous surveillance and the concerned state governments are being informed regularly.

Kindly visit www.rsmcnewdelhi.imd.gov.in and www.mausam.imd.gov.in for regular updates.

Contact: Cyclone Warning Division, Office of the Director General of Meteorology,
India Meteorological Department, Ministry of Earth Sciences.

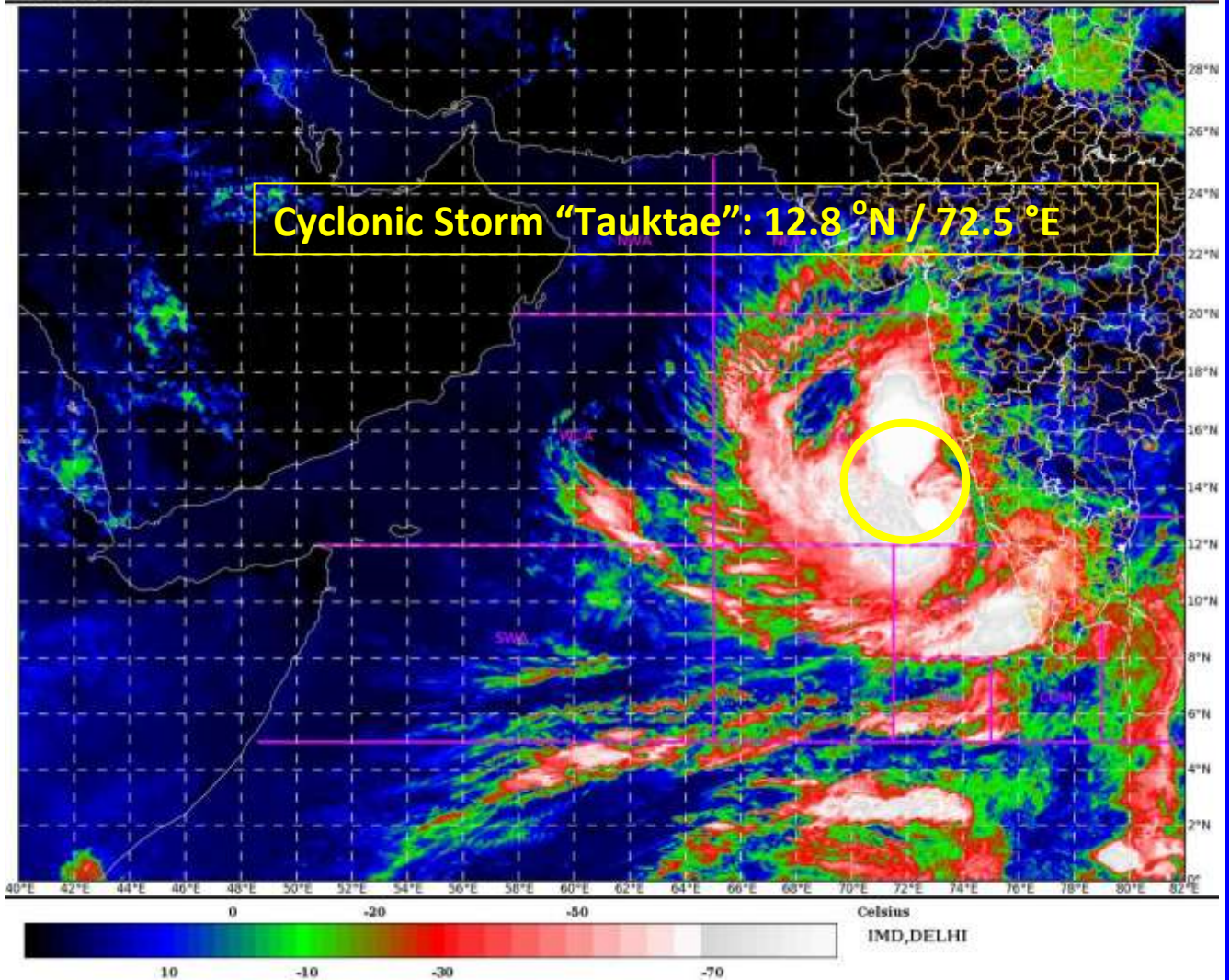
Phone: (91) 11-24652484, FAX: (91) 11-24643128, 24623220, E-mail:cwdhq2008@gmail.com, Website: rsmcnewdelhi.imd.gov.in

Spatial rainfall distribution: Isolated: <25%, A few: 26-50%, Many: 51-75%, Most: 76-100%

Rainfall amount (mm): Heavy rain: 64.5 – 115.5, Very heavy rain: 115.6 – 204.4, Extremely heavy rain: 204.5 or more.

SAT : INSAT-3D IMG
IMG_TIR1_TEMP 10.8 um
ARABIAN SEA

15-05-2021/(0430 to 0457) GMT
15-05-2021/(1000 to 1027) IST



Contact: Cyclone Warning Division, Office of the Director General of Meteorology,
India Meteorological Department, Ministry of Earth Sciences.

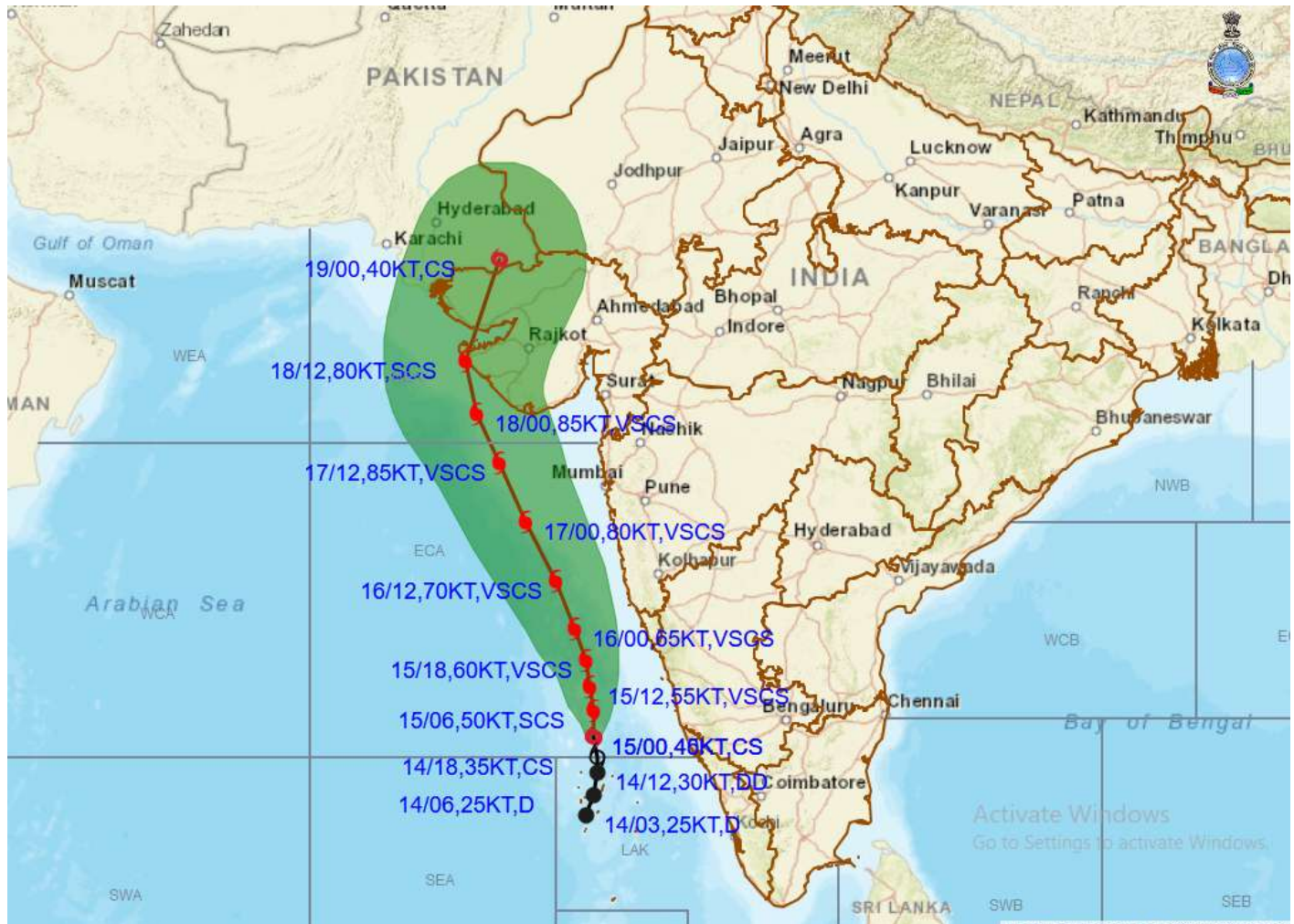
Phone: (91) 11-24652484, FAX: (91) 11-24643128, 24623220, E-mail: cwdhq2008@gmail.com, Website: rsmcnewdelhi.imd.gov.in

Spatial rainfall distribution: Isolated: <25%, A few: 26-50%, Many: 51-75%, Most: 76-100%

Rainfall amount (mm): Heavy rain: 64.5 – 115.5, Very heavy rain: 115.6 – 204.4, Extremely heavy rain: 204.5 or more.



OBSERVED AND FORECAST TRACK ALONGWITH CONE OF UNCERTAINTY OF CYCLONIC STORM "TAUKTAE" OVER EASTCENTRAL AND ADJOINING SOUTHEAST ARABIAN SEA BASED ON 0300 UTC OF 15TH MAY, 2021



DATE/TIME IN UTC
IST=UTC + 0530
L: LOW PRESSURE AREA
WML: WELL MARKED LOW PRESSURE AREA
D: DEPRESSION (17-27 KT)
DD: DEEP DEPRESSION (28-33 KT)
CS: CYCLONIC STORM (34-47 KT)
SCS: SEVERE CYCLONIC STORM (48-63KT)
VSCS: VERY SEVERE CYCLONIC STORM (64-89 KT)
ESCS: EXTREMELY SEVERE CYCLONIC STORM (90-119 KT)
SuCS: SUPER CYCLONIC STORM (≥20 KT)

- LESS THAN 34 KT
- 34-47 KT
- ≥ 48 KT
- OBSERVED TRACK
- FORECAST TRACK
- CONE OF UNCERTAINTY

Contact: Cyclone Warning Division, Office of the Director General of Meteorology,
 India Meteorological Department, Ministry of Earth Sciences.

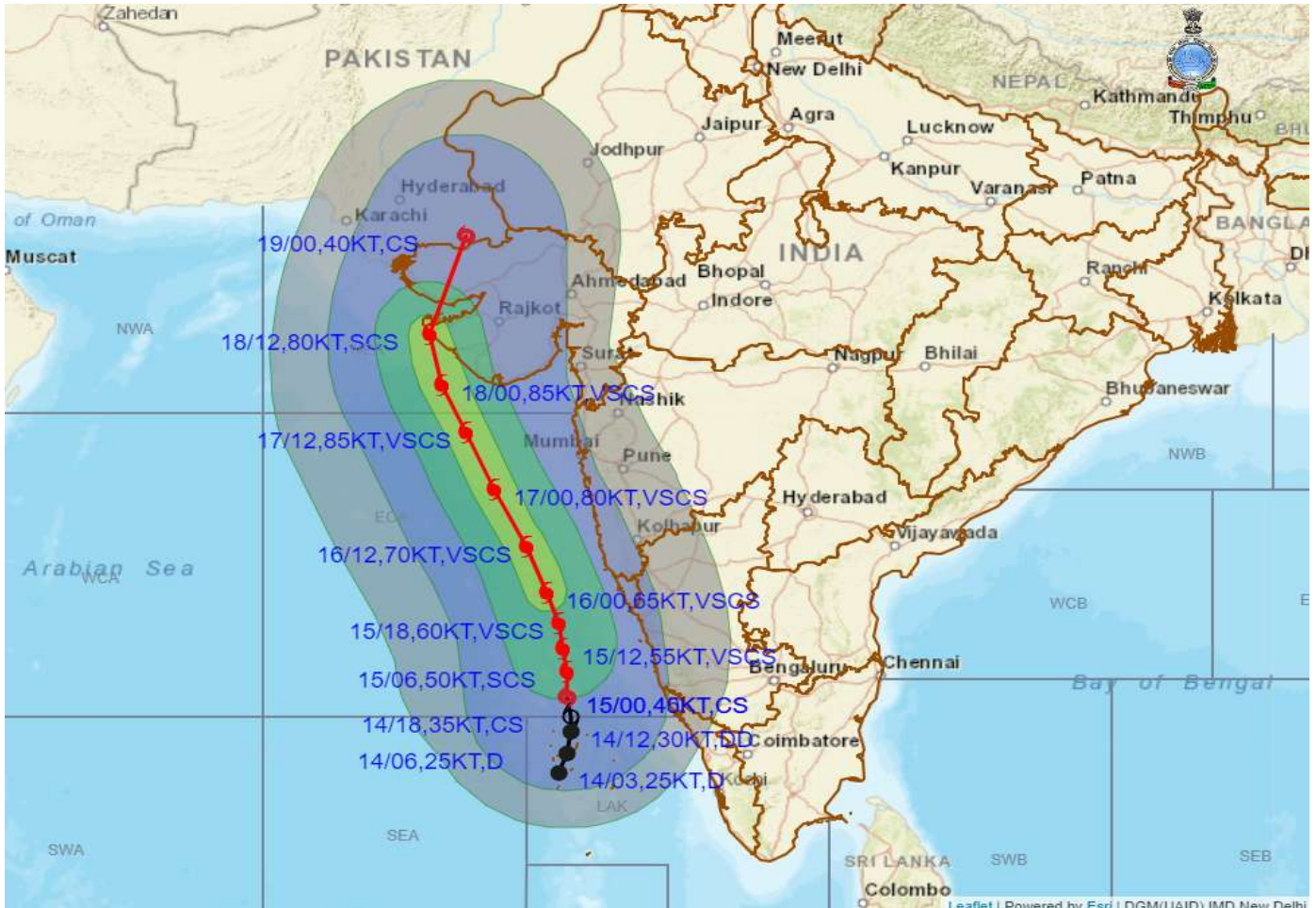
Phone: (91) 11-24652484, FAX: (91) 11-24643128, 24623220, E-mail: cwdhq2008@gmail.com, Website: rsmcnewdelhi.imd.gov.in

Spatial rainfall distribution: Isolated: <25%, A few: 26-50%, Many: 51-75%, Most: 76-100%

Rainfall amount (mm): Heavy rain: 64.5 – 115.5, Very heavy rain: 115.6 – 204.4, Extremely heavy rain: 204.5 or more.



OBSERVED AND FORECAST TRACK ALONGWITH QUADRANT WIND DISTRIBUTION OF CYCLONIC STORM "TAUKTAE" OVER EASTCENTRAL AND ADJOINING SOUTHEAST ARABIAN SEA BASED ON 0300 UTC OF 15TH MAY, 2021



DATE/TIME IN UTC

IST=UTC + 0530

L: LOW PRESSURE AREA

WML: WELL MARKED LOW PRESSURE AREA

D: DEPRESSION (17-27 KT)

DD: DEEP DEPRESSION (28-33 KT)

CS: CYCLONIC STORM (34-47 KT)

SCS: SEVERE CYCLONIC STORM (48-63KT)

VSCS: VERY SEVERE CYCLONIC STORM (64-89 KT)

ESCS: EXTREMELY SEVERE CYCLONIC STORM (90-119 KT)

SuCS: SUPER CYCLONIC STORM (≥ 120 KT)

- LESS THAN 34 KT
- 34-47 KT
- ≥ 48 KT
- OBSERVED TRACK
- FORECAST TRACK
- ▲ CONE OF UNCERTAINTY
- AREA OF MAXIMUM SUSTAINED WIND SPEED:
- 28-33 KT (52-61 KMPH)
- 34-49 KT (62-91 KMPH)
- 50-63 KT (92-117 KMPH)
- ≥ 64 KT (≥118 KMPH)

IMPACT OVER THE SEA

MSW (knot/kmph)	Impact	Action
28-33 (52-61)	Very rough seas	Total suspension of fishing operations
34-49 (62-91)	High to very high seas	Total suspension of fishing operations
50-63 (92-117)	Very high seas	Total suspension of fishing operations
≥ 64 (≥118)	Phenomenal	Total suspension of fishing operations

Contact: Cyclone Warning Division, Office of the Director General of Meteorology,

India Meteorological Department, Ministry of Earth Sciences.

Phone: (91) 11-24652484, FAX: (91) 11-24643128, 24623220, E-mail: cwdhq2008@gmail.com, Website: rsmcnewdelhi.imd.gov.in

Spatial rainfall distribution: Isolated: <25%, A few: 26-50%, Many: 51-75%, Most: 76-100%

Rainfall amount (mm): Heavy rain: 64.5 – 115.5, Very heavy rain: 115.6 – 204.4, Extremely heavy rain: 204.5 or more.